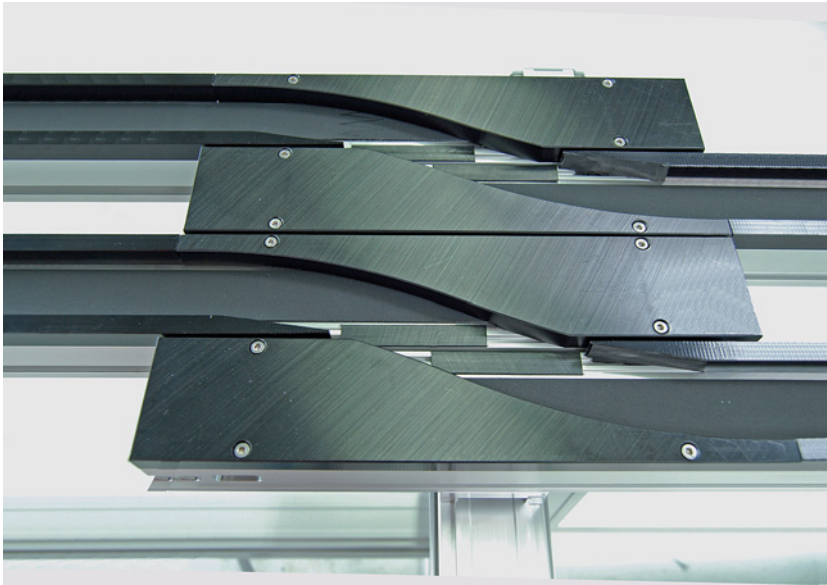


## TRANSFER SYSTEM WITH SIMPLE PASS



### TECHNICAL DATA

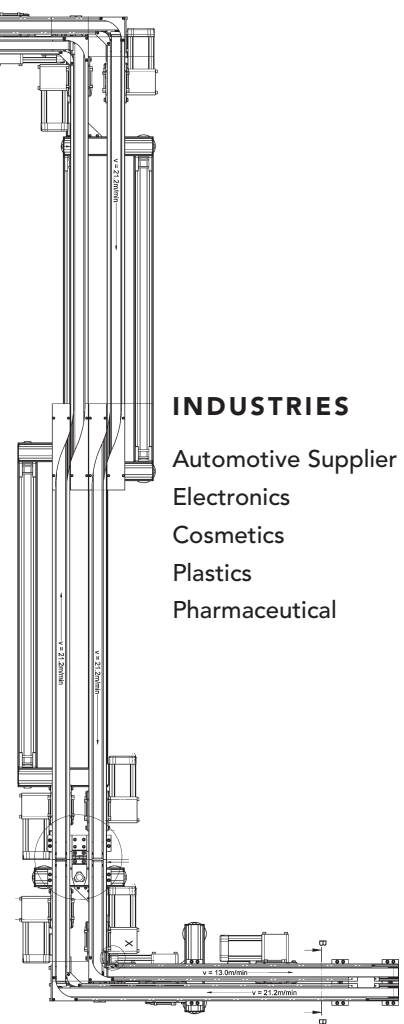
Type of conveyor	LTE-60 transfer system
Drive	Three-phase motor 3x480 V, 60 Hz
Conveyor width	60 mm
Workpiece holder	37 x 37 mm
Conveyor length	Total 11 552 mm
Transport weight	25 kg per conveyor
Speed	13.0 and 21.2 m/min
Opening passage	1000 mm
Locking	Mechanical
Belt type endless	ENI-5EE
Substructure	Quick-Set profile framing system, movable passage

### SPECIAL FEATURES

- retractable pass-through on castors
- mechanical locking mechanism
- simple, manual system

### PROJECT DESCRIPTION

Instead of a typical swiveling conveyor, this single conveyor with a simple pass-through transfer section easily retracts to allow access to both sides of the production line and then extends to reconnect the system.



### INDUSTRIES

- Automotive Supplier
- Electronics
- Cosmetics
- Plastics
- Pharmaceutical

**MONTECH**<sup>®</sup>  
more than technology

MONTECH AG  
Gewerbstrasse 12  
CH-4552 Derendingen  
Fon +41 32 681 55 00  
info@montech.com  
www.montech.com