

SHORT CONVEYOR SOLTB-K

(to check wafer edges)

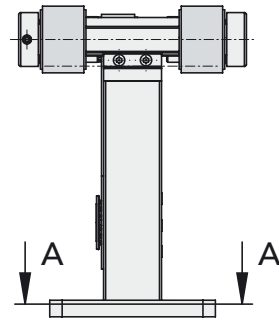
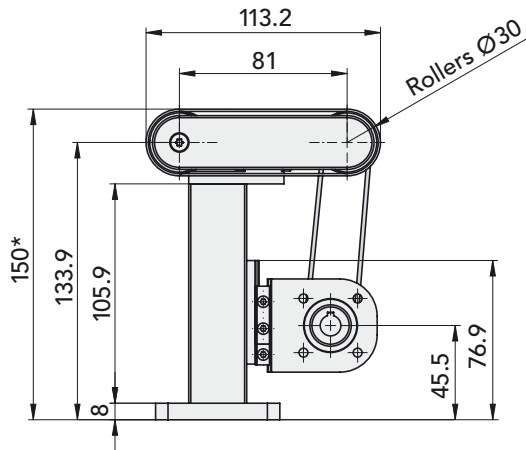


The Short Conveyor can be used for accurately check wafer edges. Since the conveyor is shorter and narrower than the wafer, the contours of the conveyor, which could interfere with the measuring results, are not visible.

ADVANTAGES:

- > Space-saving due to center drive
- > Small dimensions
- > Include drive components for
Neugart gearhead PLE-40 (gear shafts $\text{Ø}10 \text{ h7}$)
Maxon gearhead GP 32 A (gear shafts $\text{Ø}6_{-0.004}^{-0.015}$)
- > Drive roller diameter 30 mm

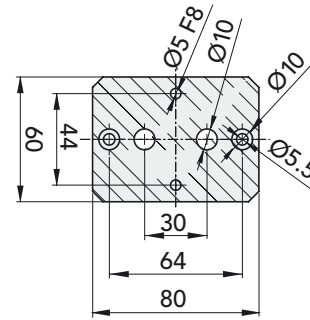
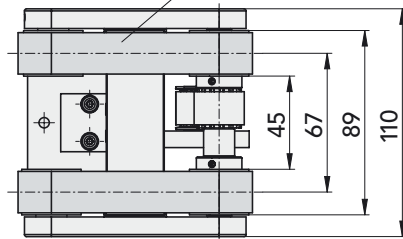
SHORT CONVEYOR SOLTB-K - DIMENSION



Base plate

A-A

Width of belt = 20 mm



* Height individually definable

SHORT CONVEYOR SOLTB-K - TECHNICAL DATA

| | | |
|------------------------------------|-------|--|
| Chassis width | [mm] | 110 |
| Roller spacing | [mm] | 81 |
| Weight | [kg] | 0.55 |
| Required drive torque | [Nm] | 0.5 |
| Noise pressure level | [dBA] | < 60 |
| Motor (motor bracket) prepared for | | Neugart gearhead PLE-40, Maxon gearhead GP32 A |
| Ambient conditions: temperature | [°C] | 10 to 40 |
| rel. humidity | | <95% (without condensation) |
| air purity | | normal workshop atmosphere |
| Warranty period | | 2 years from the date of delivery |
| Installation position | | horizontal |
| Accessories: foot | | height according to customer specification |

MONTECH[®]
more than technology

MONTECH AG
Gewerbstrasse 12
CH-4552 Derendingen
Fon +41 32 681 55 00
Fax +41 32 682 19 77
info@montech.com
www.montech.com