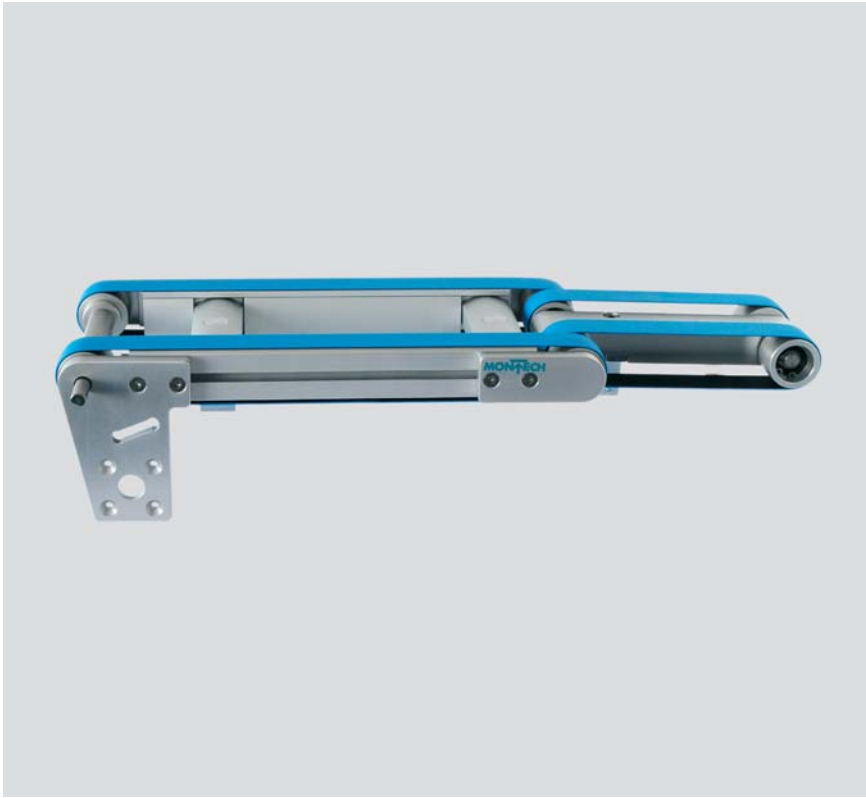


SWIVELING CONVEYOR SOLTB-S 90° / 30°

(for loading and unloading carriers)



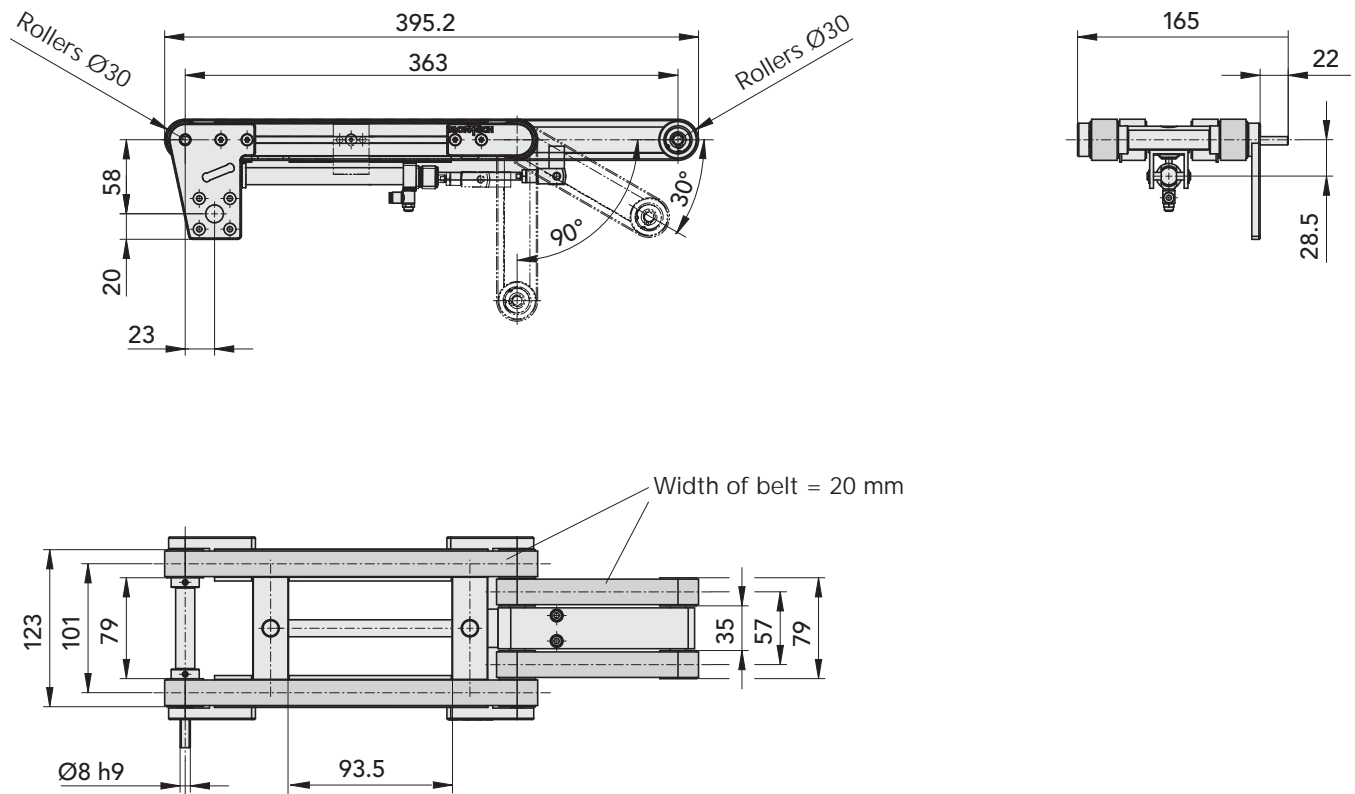
With the Swiveling Conveyor SOLTB-S 90° and SOLTB-S 30° can wafer, solar cells or similar products be removed from a carrier, in order to supply the production line.

The SOLTB-S finds further applications in loading carrier, or in addition, to removing incorrect products in the line.

ADVANTAGES:

- > *Pivot angle 0/90° 0/30°*
- > *Left-side or right-side drive upon request*
- > *Include drive components for
Neugart gearhead PLE-40 (gear
shafts Ø10 h7)
Maxon gearhead GP 32 A (gear
shafts Ø6^{-0.004}_{-0.015})*

SWIVELING CONVEYOR SOLTB-S 90° / 30° - DIMENSION



SWIVELING CONVEYOR SOLTB-S 90° / 30° - TECHNICAL DATA

Pivot angle	[°]	0/90	0/30
Piston diam. / piston rod diameter	[mm]	12 / 6	
Weight	[kg]	2.0	
Required drive torque	[Nm]	0.5	
Operating pressure	[bar]	3–6	
Driving medium		air unooled, filtered to 5 µm, dew point < 6°C	
End stop absorption		keine	
Check of end positions 0°/90° 0°/30°		inductive proximity switches (not included in delivery scope)	
Pneumatic connection	[mm]	hose-Ø 4	
Speed control		adjustable exhaust air flow control valves	
Noise pressure level	[dBA]	< 60	
Motor (motor bracket) prepared for		Neugart gearhead PLE-40, Maxon gearhead GP32 A	
Ambient conditions: temperature	[°C]	10 to 40	
rel. humidity		<95% (without condensation)	
air purity		normal workshop atmosphere	
Warranty period		2 years from the date of delivery	
Installation position		horizontal	

MONTECH®
more than technology

MONTECH AG
Gewerbestrasse 12
CH-4552 Derendingen
Fon +41 32 681 55 00
info@montech.com
www.montech.com