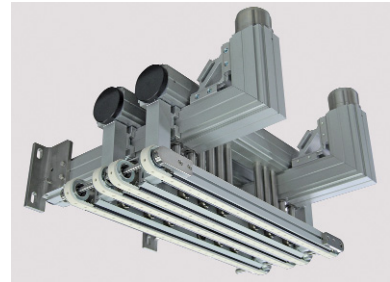
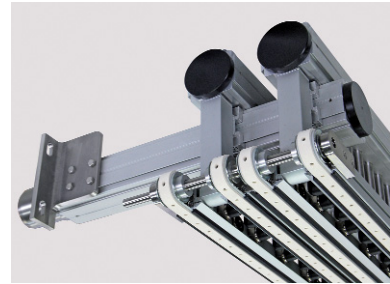
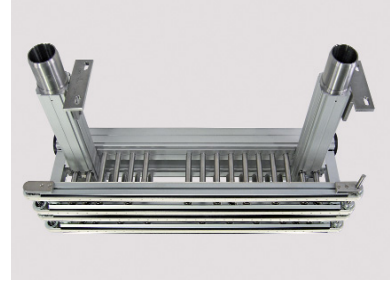
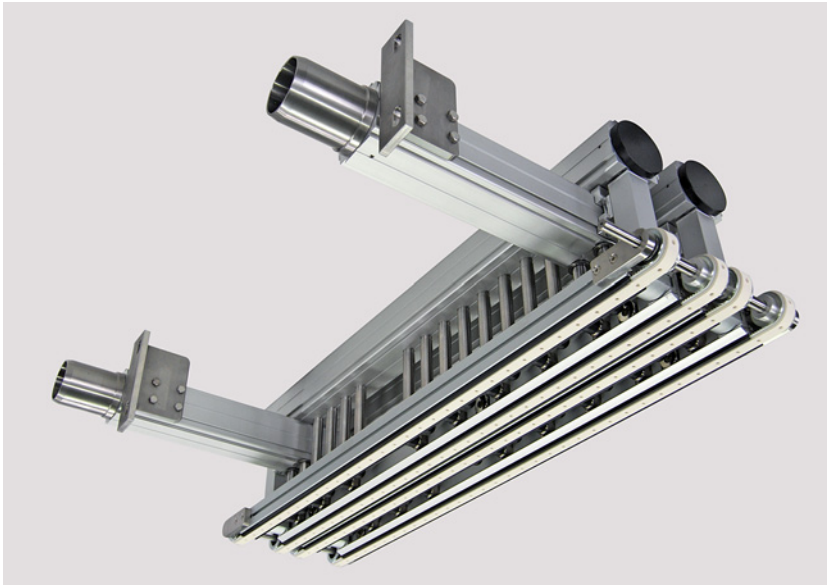


## OVERHEAD VACUUM CONVEYOR



### TECHNICAL DATA

Type of conveyor	Vacuum conveyor with vacuum storage device
Drive	Customer-specific over shaft end
Chassis width	194 mm
Belt center distances	66 / 34 / 66 mm
Conveyor length	508 mm / 798 mm
Axle drive shaft	Ø 10 mm
Belt type endless	Toothed belt with FDA compliant coating
Connecting piece	Straight / angled 90°

### SPECIAL FEATURES

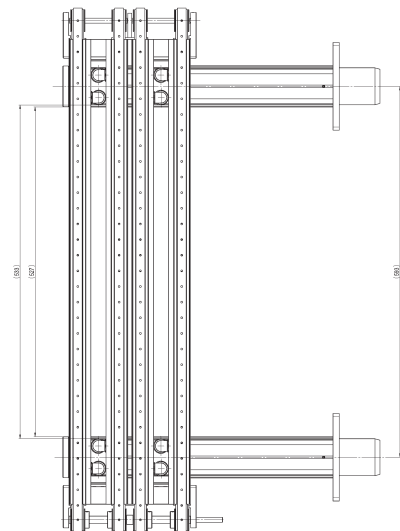
- overhead transport of adhesive bandages
- vacuum storage device to provide constant suction
- configured for wall mounting

### PROJECT DESCRIPTION

The vacuum conveyor, which easily mounts to a wall, is configured to provide overhead transport of adhesive bandages. A vacuum storage device compensates for fluctuations in the suction capacity. The customer specifies the motor, which is then mounted to the belt via a drive connection.

### INDUSTRY

Medical



**MONTECH**<sup>®</sup>  
more than technology

MONTECH AG  
Gwerbestr. 12  
CH-4552 Derendingen  
Fon +41 32 681 55 00  
info@montech.com  
www.montech.com