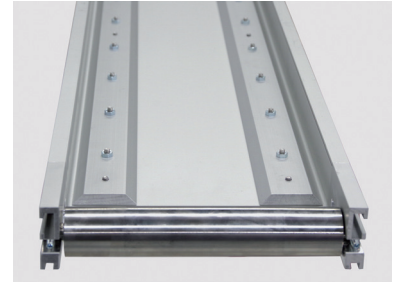
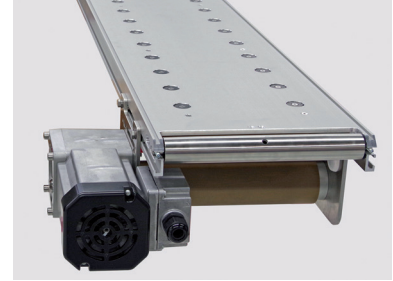
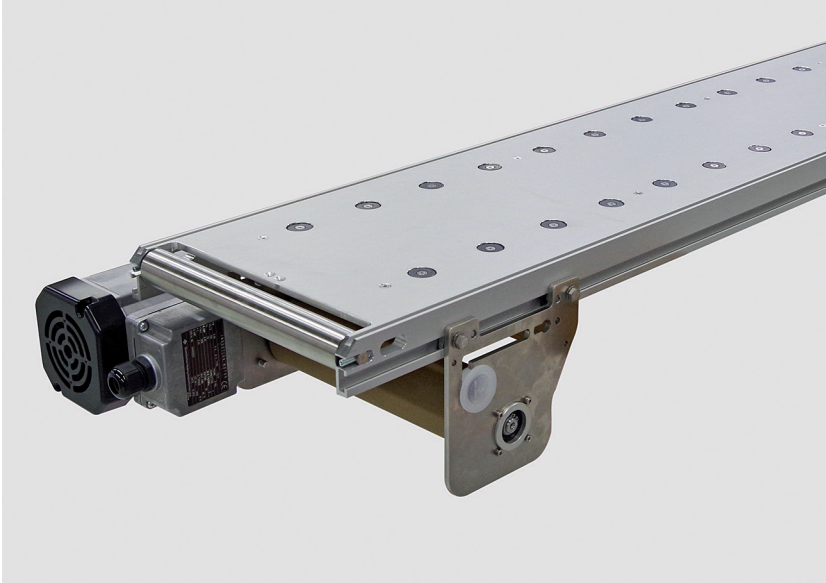


MAGNETIC CONVEYOR FOR METAL PARTS



TECHNICAL DATA

Type of conveyor	TB30-250 magnetic
Drive	Center drive, three-phase motor
Width over chassis	250 mm
Conveyor length	1550 mm
Max. transport weight	41 kg conveying mode
Speed	27.3 m/min

SPECIAL FEATURES

- Countersunk holes in the chassis and underlaid adapter profiles for round magnets
- Cut-out in the chassis at the outlet for accurate workpiece transfer

PROJECT DESCRIPTION

The magnetic conveyor takes over large metal parts from a punching machine and transports them precisely to the next processing step. The width of the parts may exceed the width of the chassis, because no side guides are attached. The magnets hold the stamped parts with millimeter accuracy on the belt. Small circulating rollers (Ø30 mm) and a chamfer at the outlet of the chassis are used for precise transfer. The 10 mm high round magnets are positioned under the chassis (6 mm) on an adapter profile.

INDUSTRY

Electronics, metal



MONTECH AG
Gewerbstrasse 12
CH-4552 Derendingen
Fon +41 32 681 55 00
info@montech.com
www.montech.com