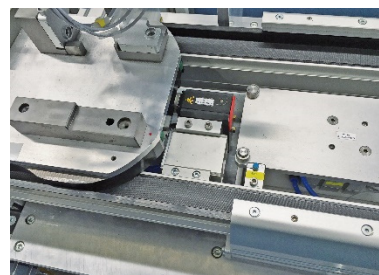
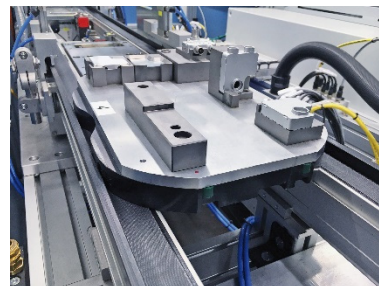
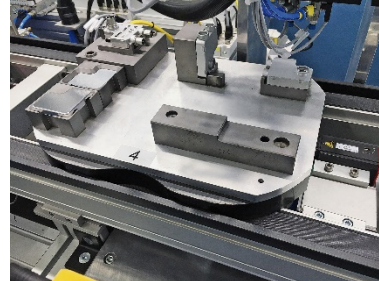


## LT40 TRANSFER SYSTEM CONNECTS LEAN ASSEMBLY CELLS



### TECHNICAL DATA

System	LT40 Transfer system
Drive	DC motor integrated in the drive shaft
Conveyor width	240 mm
Transfer plate	240 x 240 mm or 240 x 320 mm
Conveyor lengths	2200 mm / 1600 mm
Max. total weight per transfer plate	11.2 kg
Speed	20 m/min
Conveyor belts	Dual belt system, antistatic
Press force of positioning unit	1000 N
Repeatability positioning unit	± 0.05 mm

### SPECIAL FEATURES

- space-saving drive roller motor
- speed, direction of rotation, acceleration, deceleration are adjustable via fieldbus interface (profibus DP)

### PROJECT DESCRIPTION

The LT40 transfer system, featuring drive roller motors, transports carriers from an offline bypass to multiple lean assembly cells. Integration and adjustment of the system is simplified by utilizing the Quick-Set framing system.

### INDUSTRIES

Electronics  
Automotive Supplier

**MONTECH**<sup>®</sup>  
more than technology

MONTECH AG  
Gewerbestrasse 12  
CH-4552 Derendingen  
Fon +41 32 681 55 00  
info@montech.com  
www.montech.com