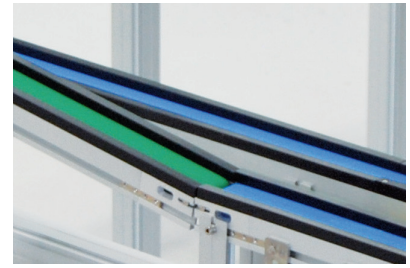
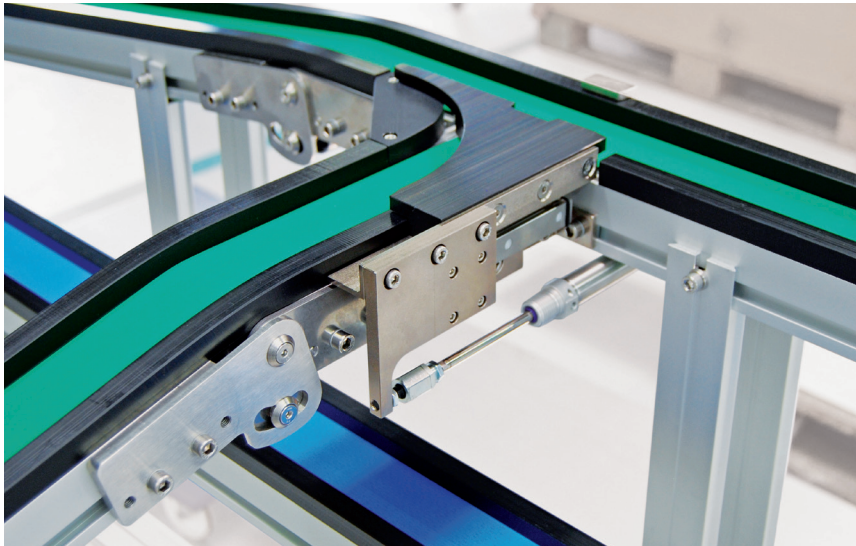


ANGLED INCLINE CONVEYOR



TECHNICAL DATA

Type of conveyor	TB-80 angled incline conveyor
Drive	Center drive 3 x 400 V / 50 Hz
Conveyor width	3.14 in (80 mm)
Useful width	Workpiece holder 1.96 x 1.96 in (50 x 50 mm)
Conveyor length	12.01 ft (3663 mm)
Max. transport weight	44 lb (20 kg)
Speed	61.35 ft/min (18.7 m/min)
Inclination	15°
Belt type endless	HAT-5E
Substructure	Quick-Set profile framing system

SPECIAL FEATURES

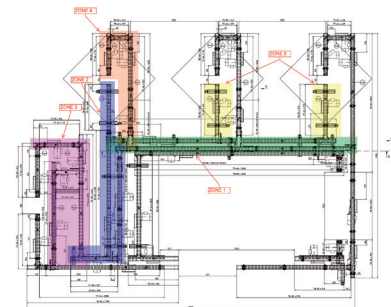
- angled conveyor with adjustable bracket
- HAT-5E belt for incline conveyor
- articulated belt with ability to tilt up to 35°

PROJECT DESCRIPTION

Montech's angled incline conveyor serves to bridge the gap when transporting parts or products between two production lines operating at different heights. An adjustable bracket offers versatility when configuring the articulation angle, allowing the conveyor to accommodate height differences of several millimeters.

INDUSTRIES

- Automotive Supplier
- Electronics
- Cosmetics
- Plastics
- Pharmaceutical



Montech Conveyors Corp
Daetwyler Plaza
13420 Reese Blvd West
Huntersville, NC 28078, USA
Phone +1 704 659 2187
info.us@montech.com