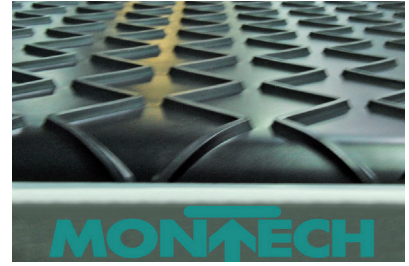
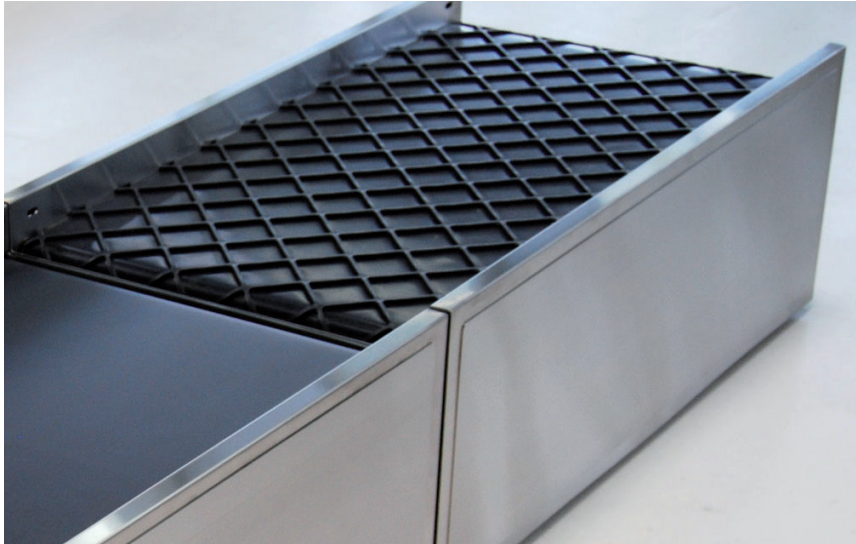


BAGGAGE CONVEYOR



TECHNICAL DATA

Type of conveyor	TB40-700 conveyor
Drive	Drum drive Ø 2.48 in (63 mm)
Conveyor width	28.54 in (725 mm)
Usable conveyor width	25.90 in (658 mm)
Conveyor length	4.24 ft (1295 mm)
Max. transport weight	110 lb (50 kg)
Speed	1.21 ft/min (0.37 m/s)
Vertical height	14.56 in (370 mm) above the ground
Substructure	Quick-Set profile framing system, mobile

SPECIAL FEATURES

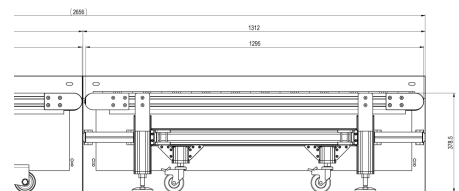
- special belt surface protects luggage
- optical sensors
- no visible bolts

PROJECT DESCRIPTION

Airport terminals will need to be larger and more efficient to cope with an increasing number of passengers and their luggage. Montech developed a solution for hand baggage control that is faster and increases cost effectiveness and efficiency. The baggage conveyor features a special belt surface to prevent abrasion and scuffing. The conveyor complies with airport standards for personal protection and fire security.

INDUSTRY

Airport



Montech Conveyors Corp.
info.us@montech.com