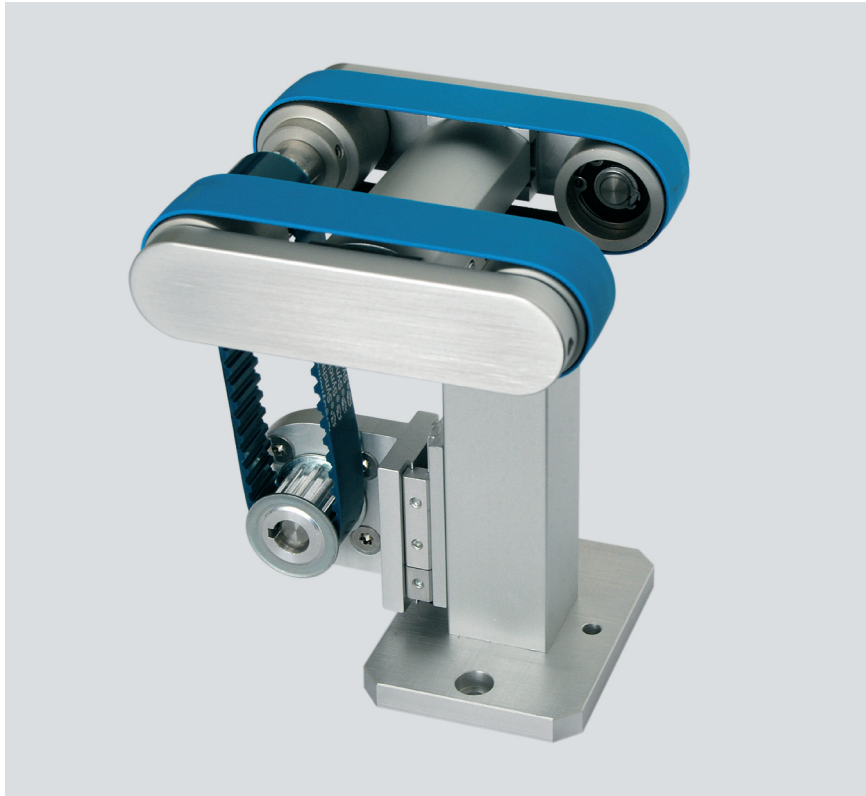


SHORT CONVEYOR SOLTB-K

(to check wafer edges)

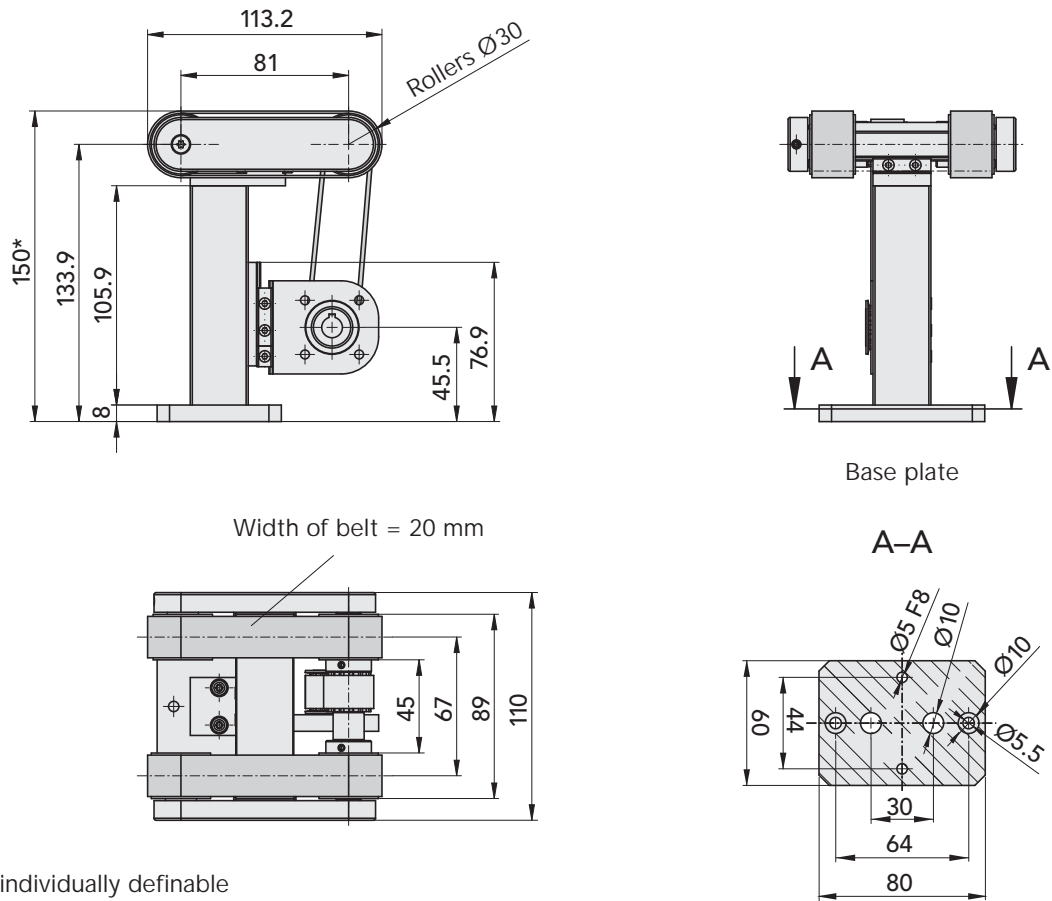


The Short Conveyor can be used for accurately check wafer edges or similar products.
Since the conveyor is shorter and narrower than the wafer, the contours of the conveyor, which could interfere with the measuring results, are not visible.

ADVANTAGES:

- > *Space-saving due to center drive*
- > *Small dimensions*
- > *Include drive components for
Neugart gearhead PLE-40 (gear shafts $\varnothing 10$ h7)
Maxon gearhead GP 32 A (gear shafts $\varnothing 6$ $^{+0.004}_{-0.005}$)*
- > *Drive roller diameter 30 mm*

SHORT CONVEYOR SOLTB-K - DIMENSION



* Height individually definable

SHORT CONVEYOR SOLTB-K - TECHNICAL DATA

Chassis width	[mm]	110
Roller spacing	[mm]	81
Weight	[kg]	0.55
Required drive torque	[Nm]	0.5
Noise pressure level	[dBA]	< 60
Motor (motor bracket) prepared for		Neugart gearhead PLE-40, Maxon gearhead GP32 A
Ambient conditions: temperature	[°C]	10 to 40
rel. humidity		<95% (without condensation)
air purity		normal workshop atmosphere
Warranty period		2 years from the date of delivery
Installation position		horizontal
Accessories: foot		height according to customer specification

MONTECH[®]
more than technology

Montech Conveyors Corp.
13420 Reese Blvd. West
Huntersville, NC 28078
Phone 704-659-2186
info.us@montech.com
www.montech.com