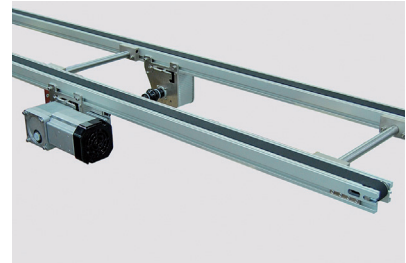
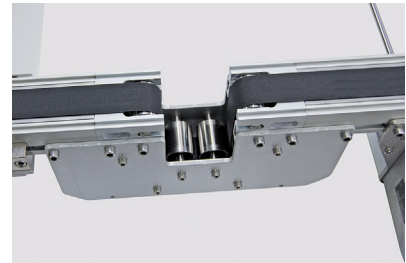
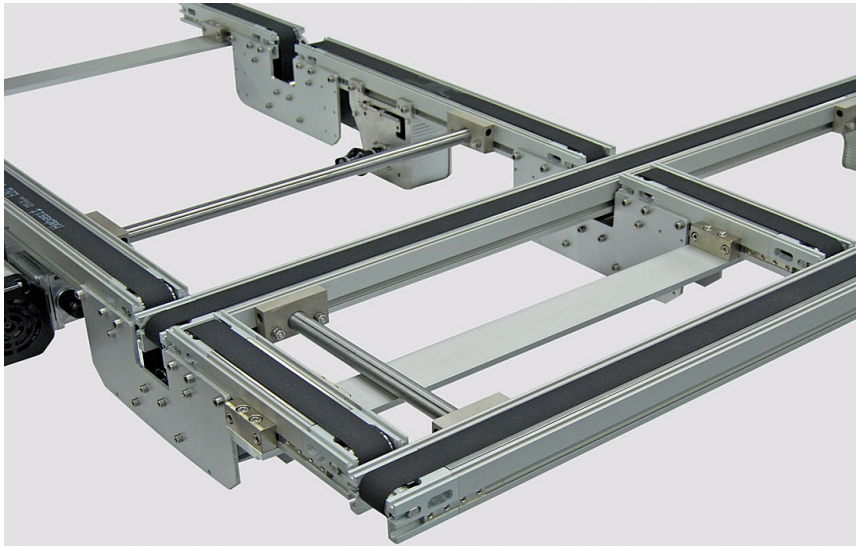


PIVOTING CONVEYOR FOR 180° TRANSFER



TECHNICAL DATA

Type of conveyor	TTBD-60 tandem conveyor
Drive	Horizontal, with three-phase motor
Belt width	1.18 in (30 mm)
Gap between chassis	11 / 20 in (280 / 508 mm)
Conveyor length	4.15 / 6.56 / 8.53 in (1267 / 2000 / 2600 mm)
Max. transport weight	114.64 lb (52 kg) buffering mode
Speed	35.76 ft/min (10.9 m/min)

SPECIAL FEATURES

- cross-transfer large, heavy products
- special belt guide for lateral belt with one drive

PROJECT DESCRIPTION

This pivoting conveyor is used to cross-transfer large, heavy products. The product is twice diverted 90° by a conveyor nested between tandem chassis, which lift and lower as required.

INDUSTRY

Packaging



MONTTECH[®]
more than technology

Montech Conveyors Corp
Daetwyler Plaza
13420 Reese Blvd West
Huntersville, NC 28078, USA
Phone +1 704 659 2187
info.us@montech.com