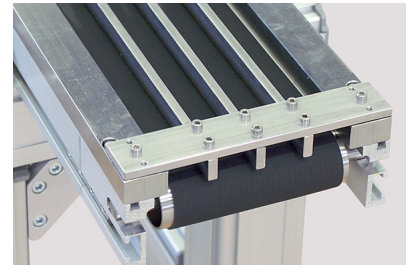
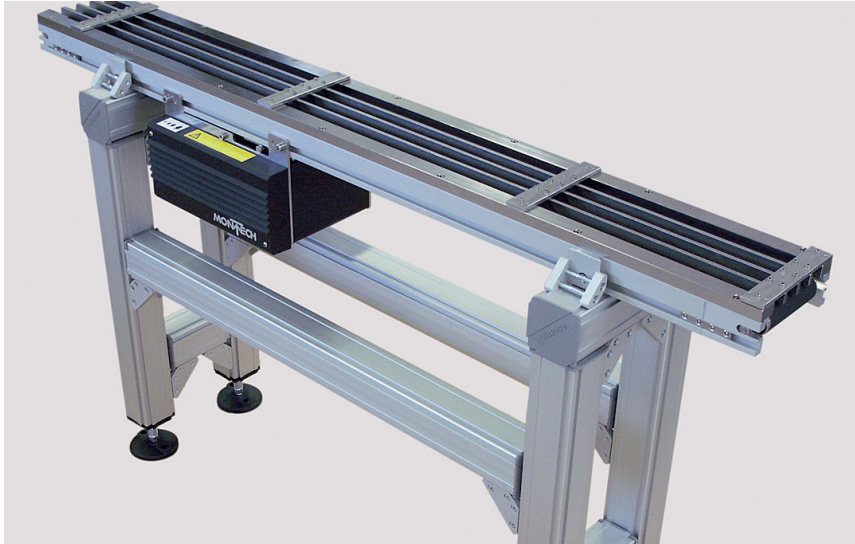


## SINGLE BELT, MULTI-TRACK CONVEYOR



### TECHNICAL DATA

Type of conveyor	TB-140 Conveyor
Drive	Horizontal center drive with gear motor
Conveyor width	5.51 in (140 mm)
Useful width	3.54 in (90 mm)
Conveyor length	3.93 ft (1200 mm)
Max. transport weight	44 lb (20 kg)
Lateral guides	Stainless steel
Belt type endless	ENI-5EE black, antistatic
Substructure	Quick-Set profile framing system

### INDUSTRIES

Electronics  
Plastics

### SPECIAL FEATURES

- single-belt conveyor with four tracks of 0.78 in (20 mm) wide
- stainless steel lateral guides
- anti-static belt

### PROJECT DESCRIPTION

Designed with three high-quality stainless steel lateral guides, this single-belt conveyor is divided into four tracks that are each 0.78 in (20 mm) wide and 0.55 in (14 mm) high. Sensitive small parts can be securely and safely transported along the anti-static belt.



Montech Conveyors Corp  
Daetwyler Plaza  
13420 Reese Blvd West  
Huntersville, NC 28078, USA  
Phone +1 704 659 2187  
info.us@montech.com