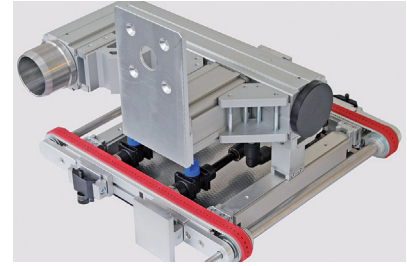
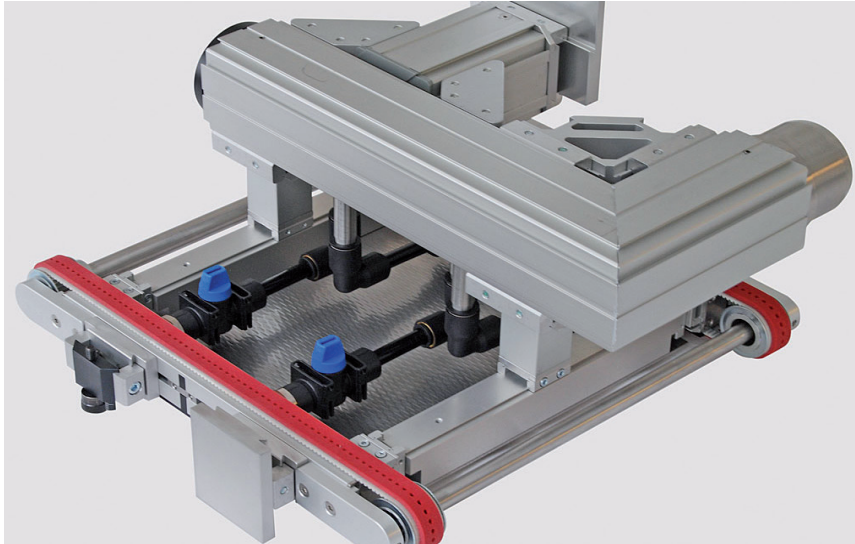


VACUUM CONVEYOR: OVERHEAD TRANSPORT



TECHNICAL DATA

Type of conveyor	SOLTB-V vacuum conveyor
Drive	Motor bracket prepared for Neugart PLE80
Width over chassis	11.77 in (299 mm)
Conveyor length	2.78 / 7.88 / 9.75 ft (850 / 2402 / 2973 mm)
Sliding plates	0 to 0.39 in (10 mm) height adjustable
Belt type endless	Toothed belt with perforated
Substructure	Quick-Set profile framing system

SPECIAL FEATURES

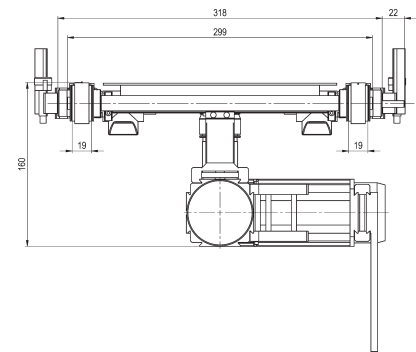
- conveyor can be configured for any vacuum pump
- adjustable sliding plates from 0 to 0.39 in in height

PROJECT DESCRIPTION

The SOLTB-V vacuum conveyor is used to transport delicate plastic film along a production line. The system is designed with sliding plates that are adjustable from 0 to 0.39 in in height to accommodate various materials. The system is constructed with the Quick-Set modular mounting and framework system, making it easy to connect the vacuum attachment to the chassis.

INDUSTRY

Packaging



Montech Conveyors Corp
Daetwyler Plaza
13420 Reese Blvd West
Huntersville, NC 28078, USA
Phone +1 704 659 2187
info.us@montech.com