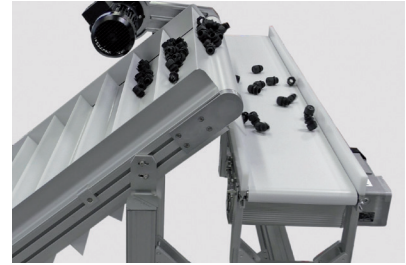
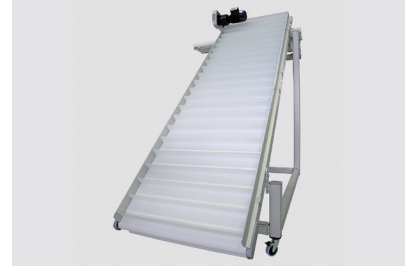


## INCLINE CONVEYOR WITH PERPENDICULAR DISCHARGE



### TECHNICAL DATA

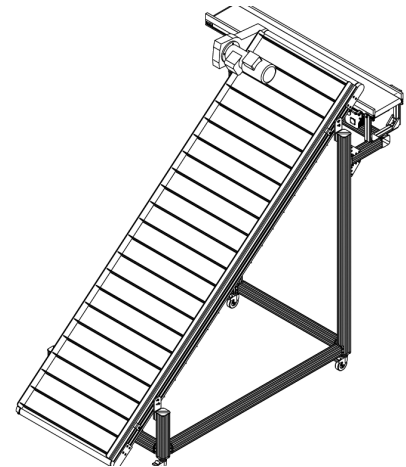
Type	GTB-800 Max Conveyor
Drive	End drive, at the top
Conveyor belt width	31.5 in (800 mm)
Useable width	29 in (737 mm)
Transport length	8.89 ft (2710 mm)
Max. transport weight	220.5 lb (100 kg)
Speed	28.5 ft/min (8.7 m/min)
Inclination	5.90 ft (1800 mm)
Belt type endless	F-8EXWT with cleats 7.7 in (118.5 mm) gap
Cleat width	28.7 in (730 mm) centered
Belt type discharge conveyor	Conveyor TB30-250
Drive discharge conveyor	Three-phase motor center drive
Substructure	Quick-Set framing system, mobile

### PROJECT DESCRIPTION

Candy is ejected from production equipment onto a incline conveyor (GTB) featuring a silicone belt with cleats. The GTB elevates the products and discharges onto a perpendicular TB30 conveyor, the sweets are checked with a camera and conveyed either to the left or right for further processing.

### INDUSTRY

Packaging



Montech Conveyors Corp.  
info.us@montech.com